

USER GUIDE

Label Printer



Driver Installation Guide

Please read the guide before use!

Contents

Connecting the Printer	1
Loading the Paper	2
Function Button Operation	2
LED Indicator Light	2
Driver for Windows -1 (Quick Installation)	3
Driver for Windows -2 (Custom Installation)	7
Driver for macOS	13

Connecting the Printer

1. Connect USB Cable

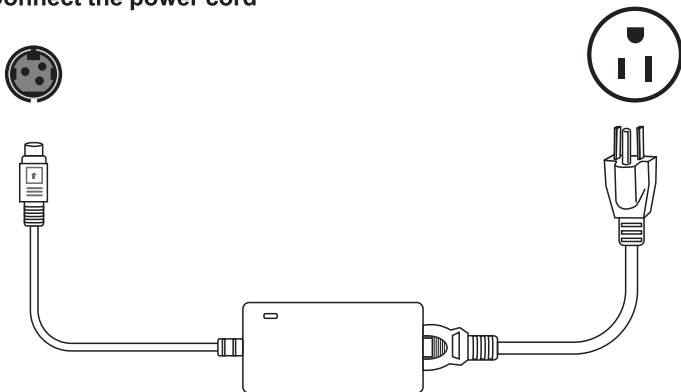


① Plug USB cable into the printer

② Plug USB cable into the computer

* Please connect the USB port on the backside of the case if you are using desktop computer.

2. Connect the power cord

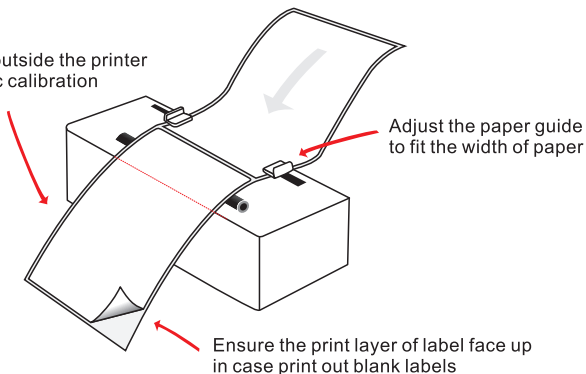


① Plug power cord into the printer

② Plug power cord into the socket

Loading the Paper

Keep 2/3 paper outside the printer exit for automatic calibration



Function Button Operation

Function	Button Operation
Feed paper	Press the FEED button once quickly
Print configuration page	Press the FEED button twice quickly
Paper calibration	Press and hold the FEED button for 2 seconds, when you hear one beep, release the button.
Factory default	Press and hold the FEED button and turn on the printer simultaneously; when you hear 3 beeps, release the button.

LED Indicator Light

LED Light Color	Printer Status
Solid blue	Power on and standby, ready for print.
Blinking blue	Paused
Solid red	Print head uplift
Blinking red	Paper end
Blinking purple	Print head overheated
Solid purple	Hardware Error



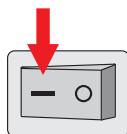
Driver for Windows

Driver for Windows -1 (Quick Installation)

Driver for Windows -2 (Custom Installation)

Read below carefully before installing the driver

- 1.The printer is connected to the computer with USB cable properly.
- 2.The power cable is properly plugged and the printer switch button is ON.

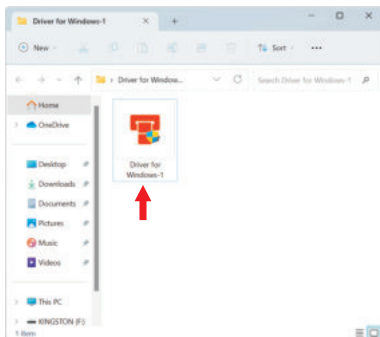


Driver for Windows -1 (Quick Installation)

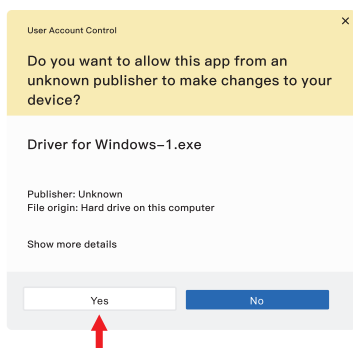


Note: Close the security software before installation

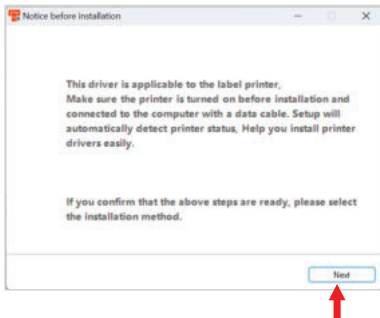
1. Double click on Driver



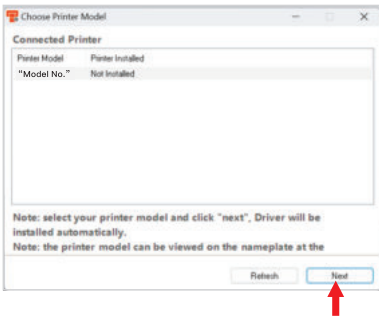
2. Click on “Yes”



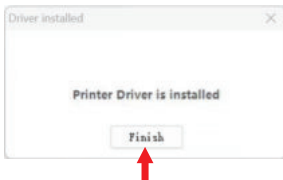
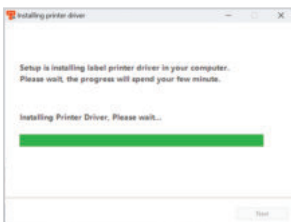
3. Click on “Next”



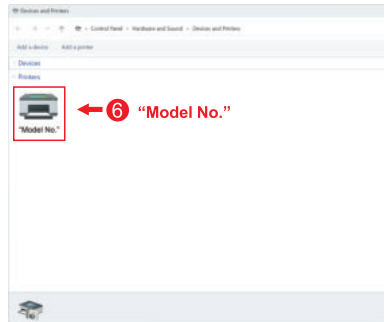
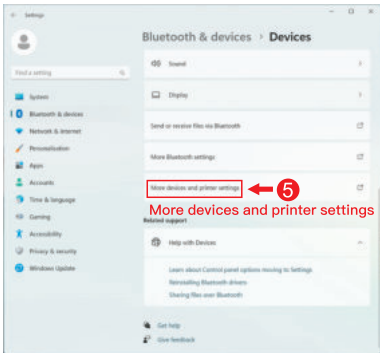
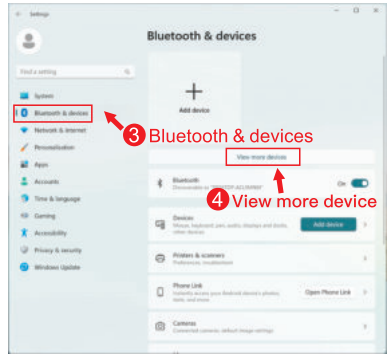
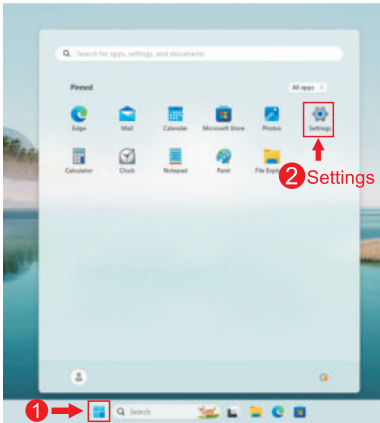
4. Click on “Next”



5. Click on “Finish”



6. Steps for how to find the installed printer in Windows 11 PC.



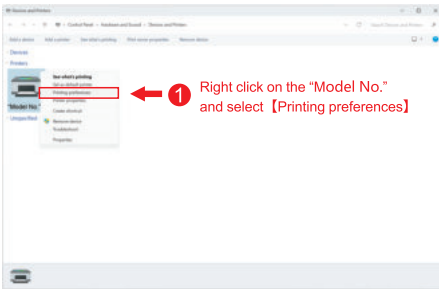
Important tips :

When [Driver for Windows-1] does not work, you can go for the solution of [Driver for Windows-2].

Printer Setting

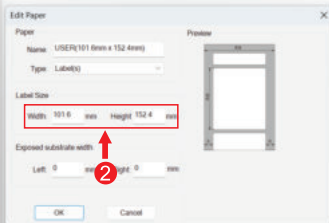
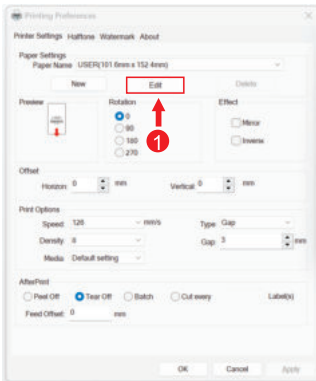
How to make the print sharper and darker?

1. By default, your printer is set to print at its fastest. Slowing this speed will result in a higher resolution.
2. Increasing the number for your density / darkness will result in a darker print. Setting the density too high will result in unwanted dark lines and/or label getting too hot and sticking mid-way to the printer head. Decreasing this number results in a lighter print.
3. Besides, to clean the print head and rubber platen roller softly with industrial alcohol-sprayed wet cloth also helps to improve the print quality.
4. If the print head is broken or the rubber platen roller worn-out, the print quality also looks not good. In this case, you are suggested to replace the print head or rubber roller.



How to set the paper?

You can choose a default from the list or edit a custom size.

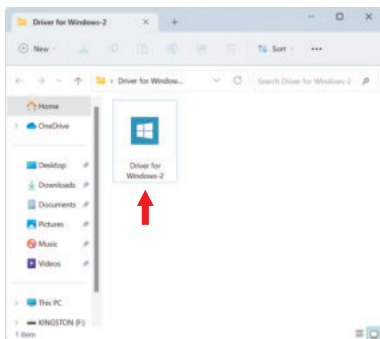


Driver for Windows -2 (Custom Installation)

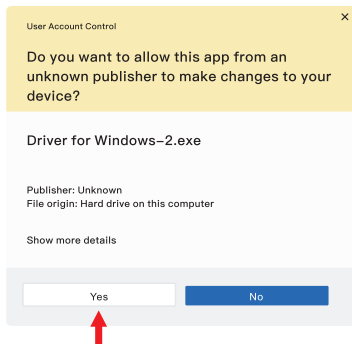


Note: Close the security software before installation

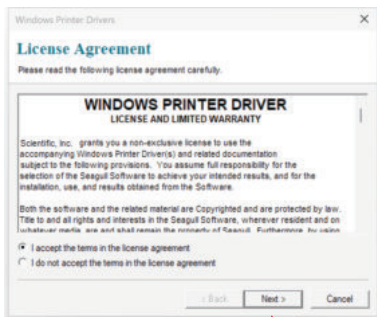
1. Double click on Driver



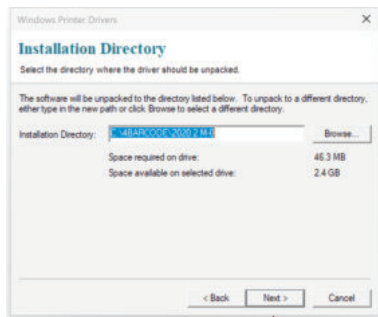
2. Click on “Yes”



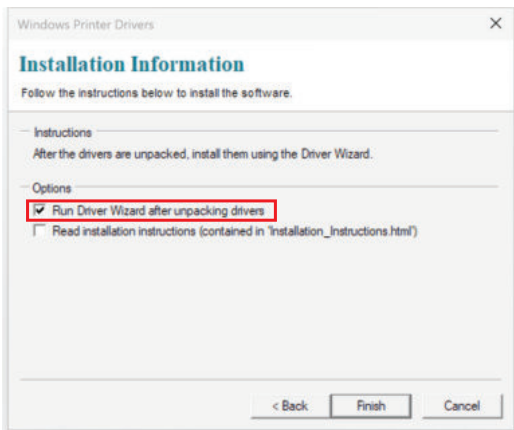
3. Click on “Next”



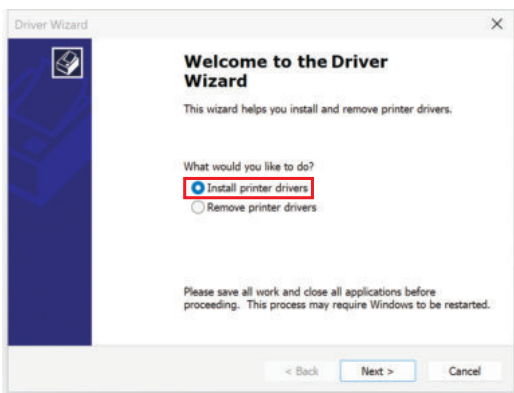
4. Click on “Next”



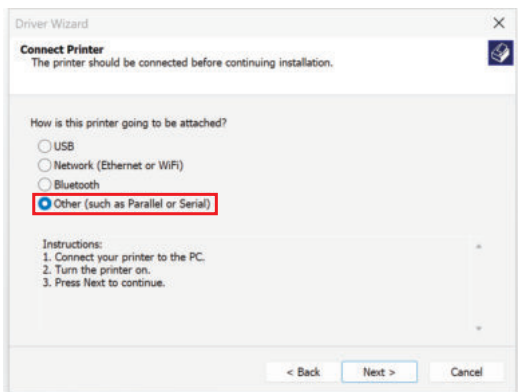
5. Click on “Finish”



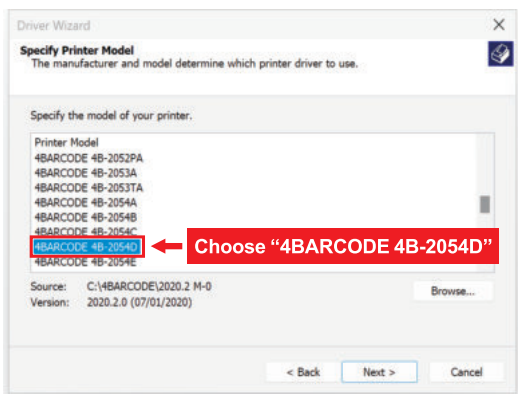
6. Click on “Next”



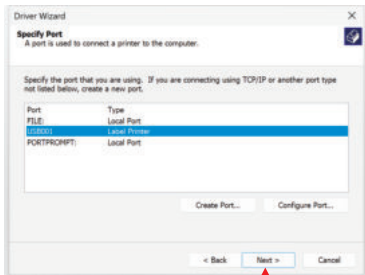
7. Choose “Other (such as Parallel or Serial)” and click on “Next”



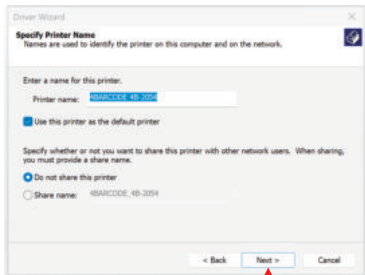
8. Choose “4BARCODE” and click on “Next”



9. Choose "USB..." and click on "Next"



10. Click on "Next"

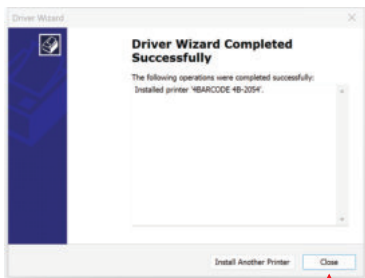


 For Win 11, choose "USB... Label Printer..."
For Win 7/ Win10, choose the biggest digit USB port

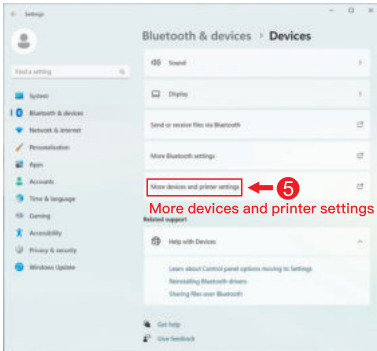
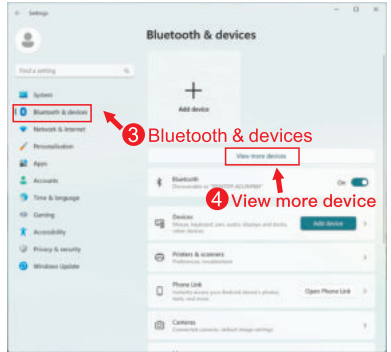
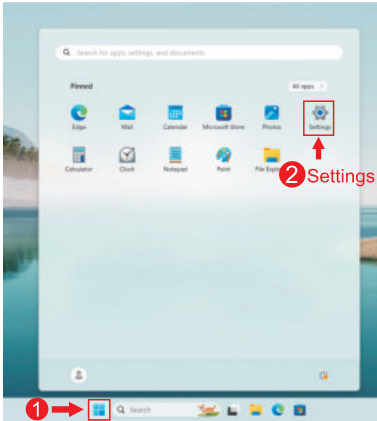
11. Click on "Finish"



12. Click on "Close"



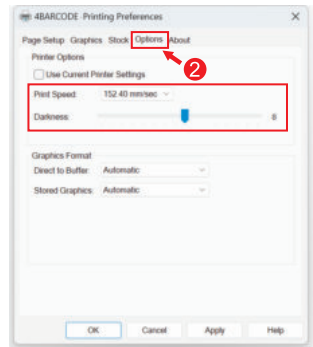
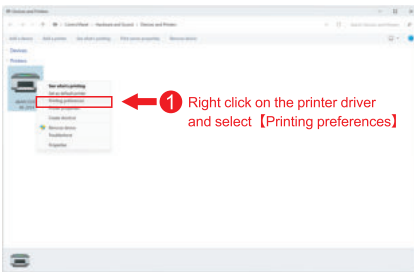
13. Steps for how to find the installed printer in Windows 11 PC.



Printer Setting

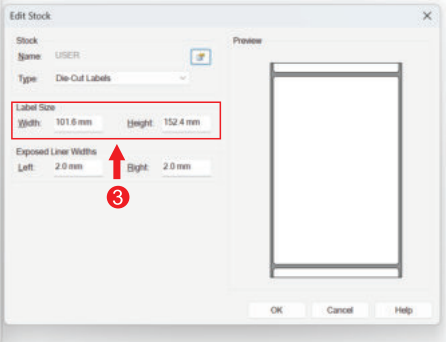
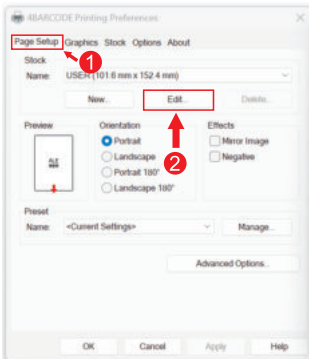
How to make the print sharper and darker?

1. By default, your printer is set to print at its fastest. Slowing this speed will result in a higher resolution.
2. Increasing the number for your density / darkness will result in a darker print. Setting the density too high will result in unwanted dark lines and/or label getting too hot and sticking mid-way to the printer head. Decreasing this number results in a lighter print.
3. Besides, to clean the print head and rubber platen roller softly with industrial alcohol-sprayed wet cloth also helps to improve the print quality.
4. If the print head is broken or the rubber platen roller worn-out, the print quality also looks not good. In this case, you are suggested to replace the print head or rubber roller.



How to set the paper?

You can choose a default size from the list or edit a custom size.

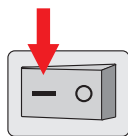




Driver for macOS

Read below carefully before installing the driver

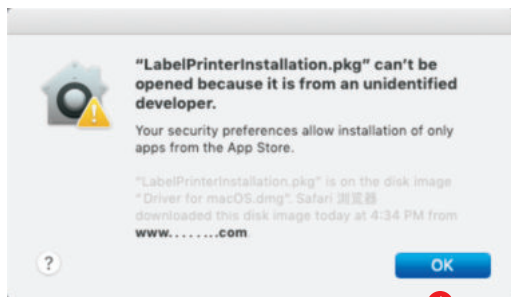
- 1.The printer is connected to the computer with USB cable properly.
- 2.The power cable is properly plugged and the printer switch button is ON.



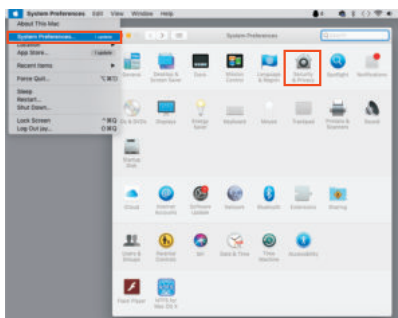
! Important tips :

As a default, macOS only permits softwares downloaded from App Store, so when it runs a software downloaded from elsewhere, it will pop out a warning page like below to stop the installation process.

Therefore, if you choose to download the driver from our official website, you will need to conduct some extra steps to ensure a successful driver installation in your macbook.

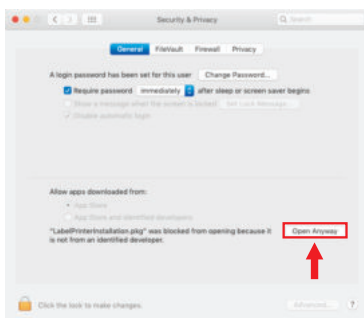


1



2

Click on "System Preferences" and click on "Security&Privacy".



3

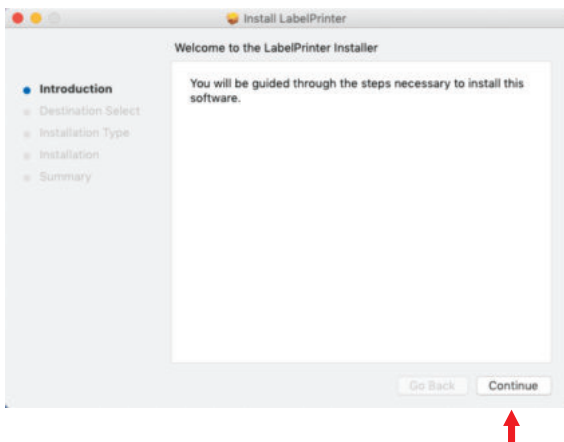
In "Security&Privacy", click on "Open Anyway".

Follow the below steps to finish the driver installation successfully.

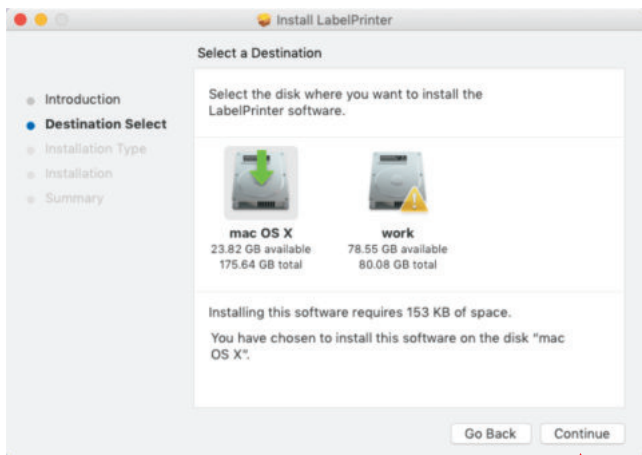
1. Please double click on the installer pkg to begin the installation.



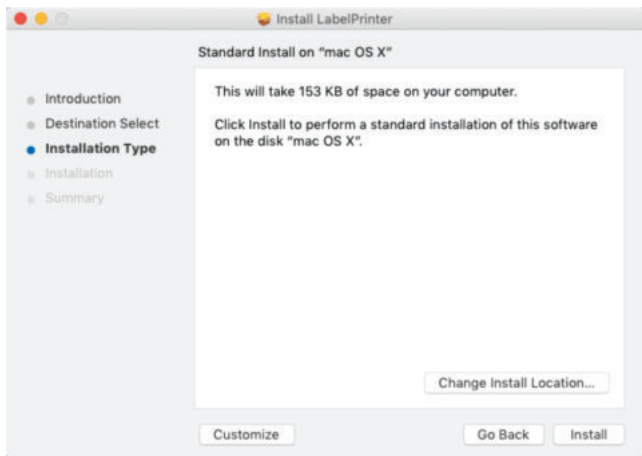
2. Click on "Continue" and proceed with the remaining installation steps.



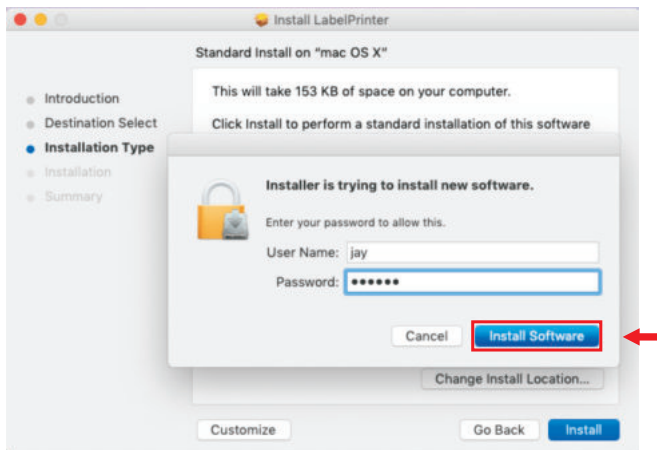
3. Click on “Continue”



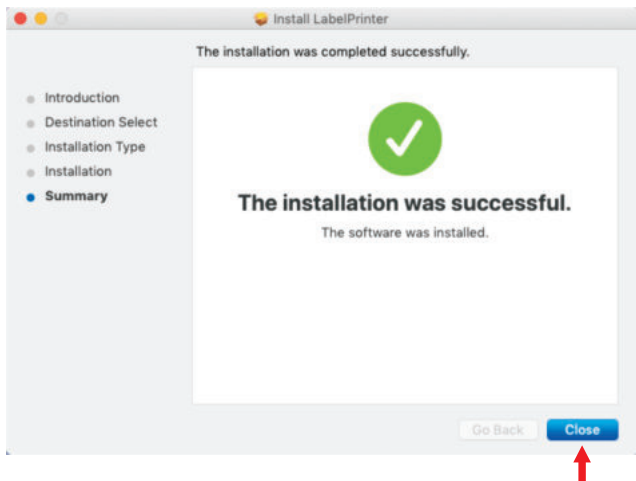
4. Click on “Install”



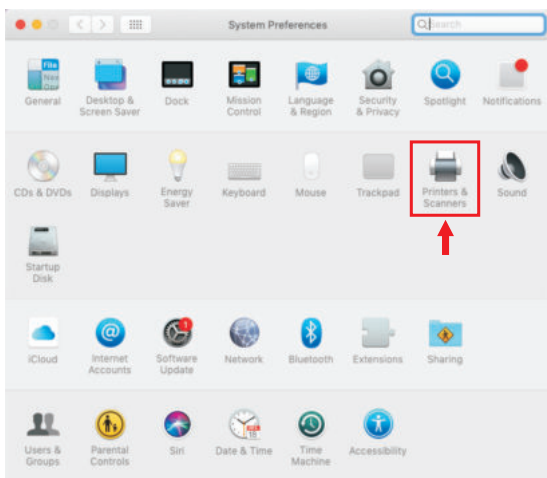
5. Click on “Install Software”



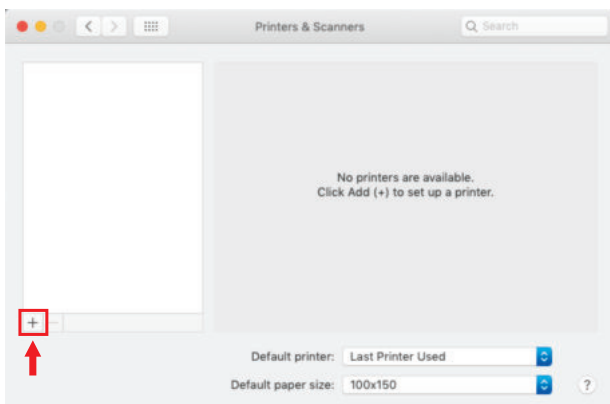
6. Click on “Close”



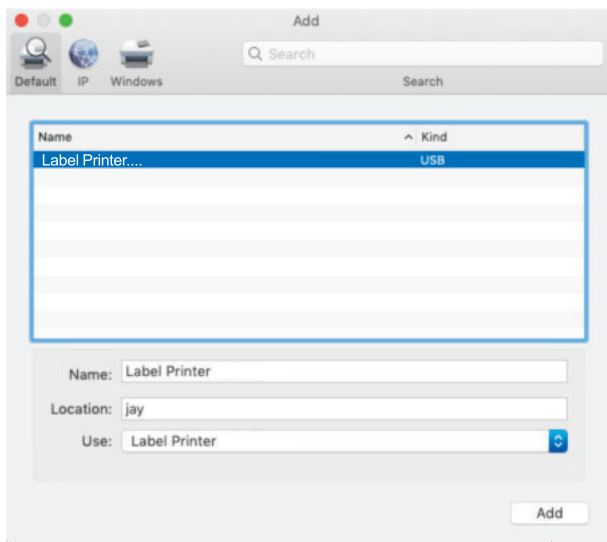
7. Click on “System Preferences” and click on “Printers &Scanners” .



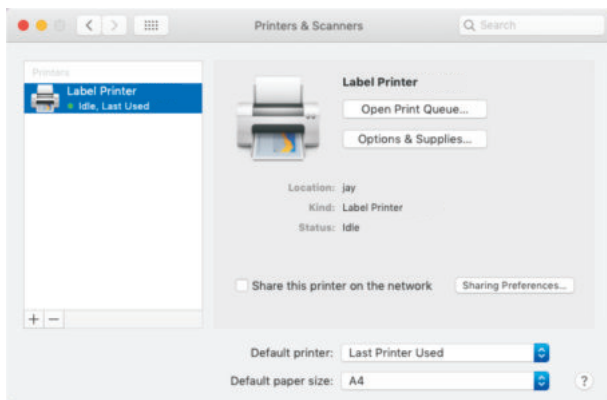
8. Click on “+”



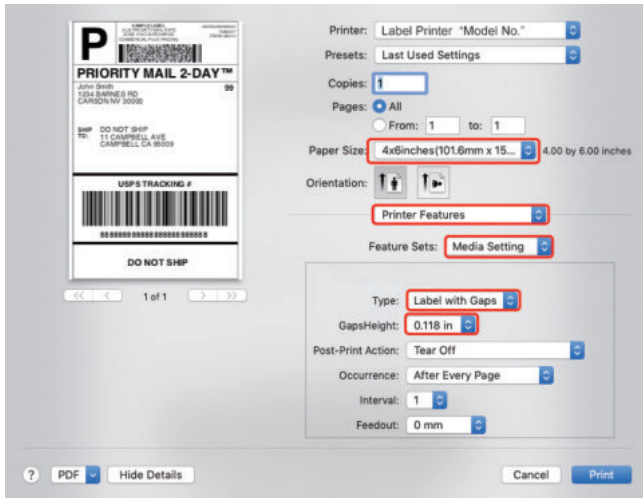
9. Click on “Label Printer ...” and Click on “Add” .



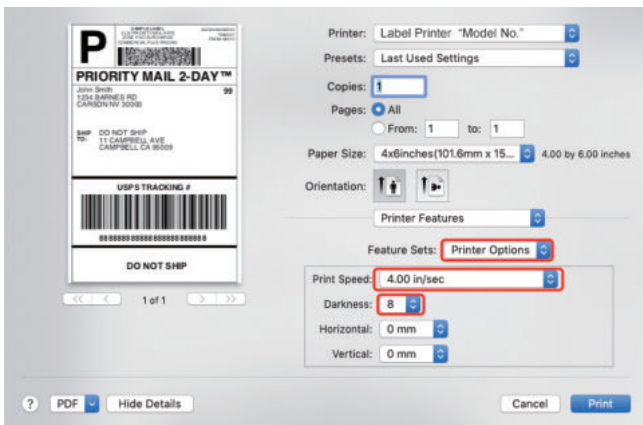
10. After adding, the printer driver model will be in the list of “Printers &Scanners” with a green light on.



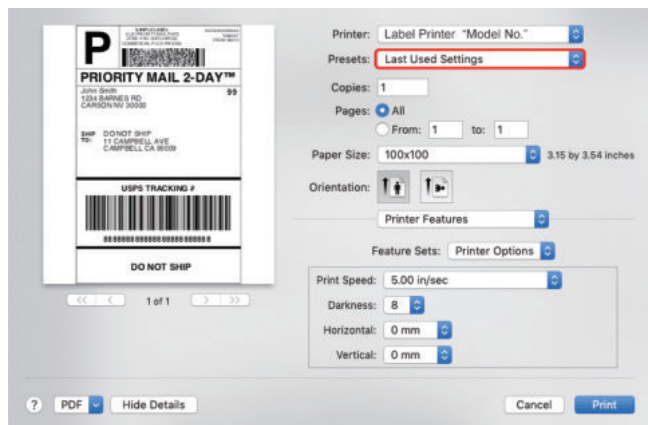
11. In the print dialogue, please be sure to select your “Paper Size” appropriately (for example 4x6).., Select “Printer Features”, then “Feature Sets”, select “Media Setting” in the drop down menu. You can set the “Type” and “GapHeight”.



12. Then select “Printer Options” in the drop down menu. You can set the “Print Speed” “Darkness”, click on “Print”.



13. Wanna print again, select the “Last Used Settings” at the “Presets” menu, click on “Print”.





USER GUIDE
