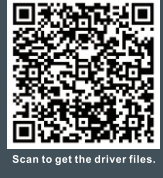
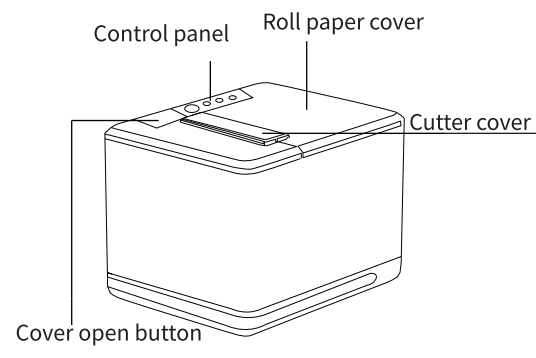


# Mini Receipt Printer User's manual



## OUTLOOK AND INSTALL PAPER ROLL



## STEP 1 - CONNECT PRINTER

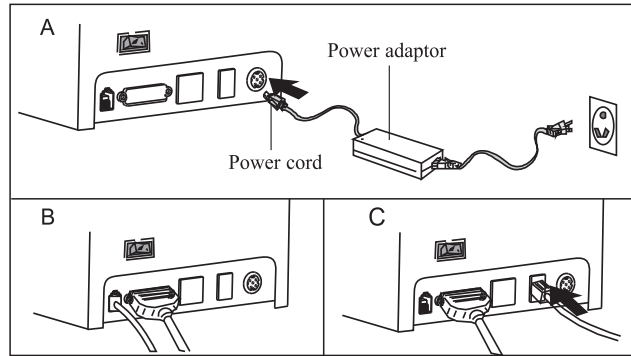
**Button name, indicator LED light and function**

**Power Indicator:**  
Lights on means connected properly.

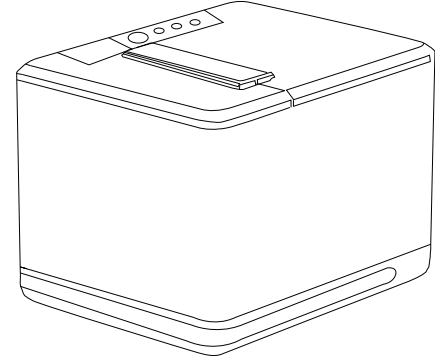
**Error Indicator:**  
When out of paper, cutter or printing head overheat occurred, the ALARM indicator twinkles.

**Paper Indicator(LED Light):**  
Blue and red lights are on means lack of paper, no alarm means normal.

**Feed Button**  
Press to feed paper manually.



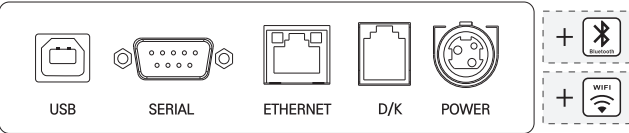
A. Connect AC cable to the power adapter , DC power cable to the printer.  
B. Connect printer and computer/tablet.  
C. Connect cash drawer.



Tips: Product design and specifications are subject to change without prior notice.

Remove the used roll paper core if any, and insert a new roll paper. The correct direction of the paper is shown in the illustration above.

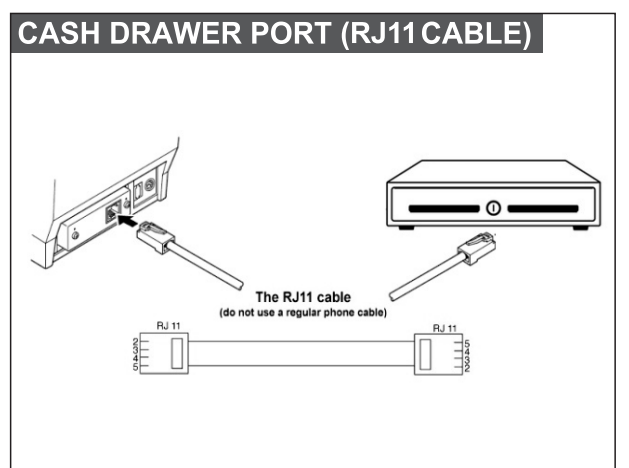
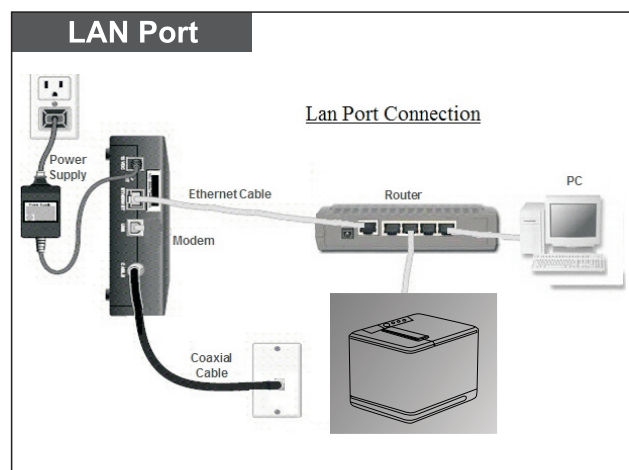
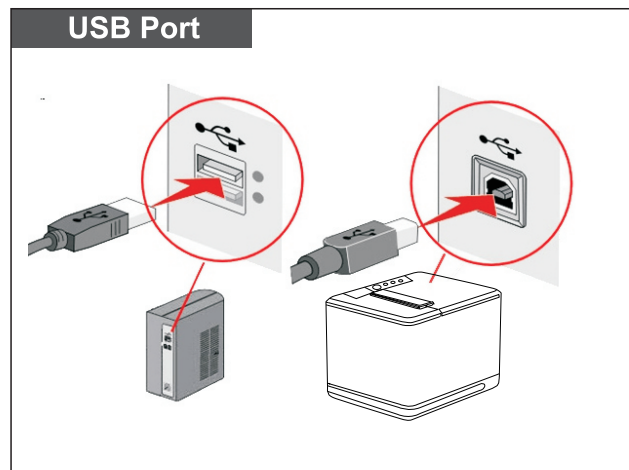
## CONNECT PRINTER



## CONNECT PRINTER

**TIPS Self Test**

Printer connected power and keep off status, then press the "FEED" button and turn on the power, after hear the beeper sounds, release "FEED button", first page will be printed, the second press in 2s for code page printing



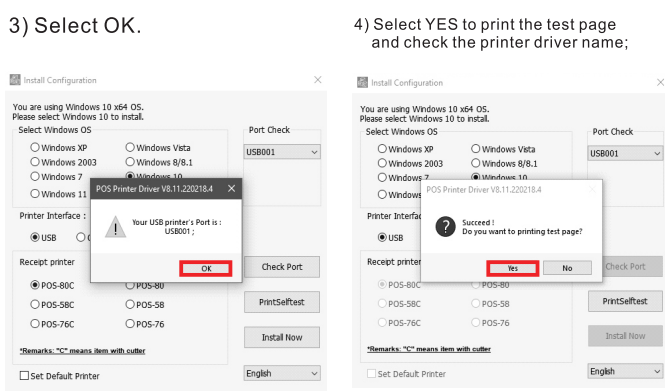
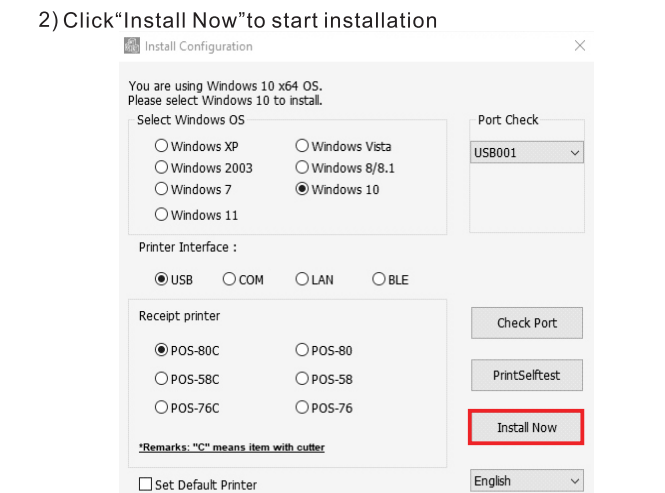
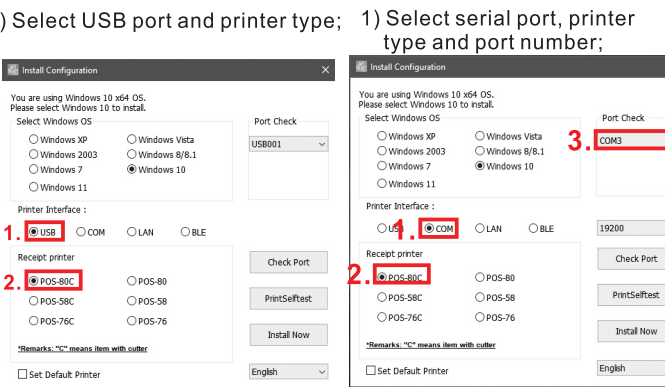
**Selftest**  
Firmware Version:2.20GR\_hwv10  
Print Speed:260mm/s  
Command mode:EPSON(ESC/POS)  
Firmware modify:2021/07/28  
Cutter enable:Yes  
Beeper enable:Yes  
Black mark mode:No  
Density Level:(Max=8)  
Char line FontA/B:48/64  
Default ASCII Font:FONTA  
Default code page:Page0  
Chinese character:No  
USB SERIAL & LAN & WIFI Interface  
USB port fixed:Yes  
USB Port mode:USB Printing  
Serial config:19200bps,n,8,1  
Ethernet:TCP/IP,10M/100M  
MAC address 00-CA-D6-CD-33-25  
IP address:192.168.1.100  
Subnet Mask:255.255.255.0  
Gate Way:192.168.1.1

**Code Page:**  
0:PC437(Std. Europe)1:(Katakana)  
2:PC850(Multilingual)3:PC860(Portugal)  
4:PC863(Canadian)5:PC865(Nordic)  
6:(West Europe)7:(Greek)  
8:(Hebrew)9:(East Europe)  
10:(Iran)11:(WPC1252)  
12:(PC866(Cyrillic#2)13:PC852(Latin2)  
14:(PC858)15:(Iran)16:(Latvian)17:(Arabic)  
18:(PT1511251)19:(PC747)  
20:(WPC1257)21:(Thai)  
22:(Vietnam)23:(PC864)  
24:(PC1001)25:(Uigur)  
26:(Hebrew)27:WPC1255(Israel)  
28:PC437(Std. Europe)29:(Katakana)  
30:PC437(Std. Europe)31:PC858(Mult)  
32:PC 852(Latin-2)33:PC860(Portugu)  
34:PC861(Icelandic)35:PC863(Canadian)  
36:PC865(Nordic)37:PC866(Russian)  
38:PC855(Bulgarian)39:PC857(Turkey)  
40:PC862(Hebrew)41:PC864(Arabic)  
42:PC737(Greek)43:PC851(Greek)  
44:PC869(Greek)45:PC928(Greek)  
46:PC772(Lithuanian)47:PC774(Lithuan)  
48:PC874(Thai)49:WPC1252(Latin1)  
50:WPC1250(Latin-2)51:WPC1251(Cyri)  
52:PC3840(BM-Russian)53:PC3841(Gost)  
54:PC3843(Polish)55:PC3844(CS2)  
56:PC3845(Hungarian)57:PC3846(Turkish)  
58:PC3847(Brazil-ABNT)59:PC3848(Brazil)  
60:PC1001(Arabic)61:PC2001(Lithuan)  
62:PC3001(Estonian)63:PC3002(Eston-2)  
64:PC3011(Latvian)65:PC3012(Latv-2)  
66:PC3021(Bulgarian)67:PC3041(Maltese)  
68:PC852(Croatia)69:VISCII  
70:WPC1256(Arabic)

## STEP 2 - INSTALL DRIVER

### USB +Serial port driver installation

1. Double-click "POS Printer Driver V8.11"  
2. USB driver installation or Serial port driver installation

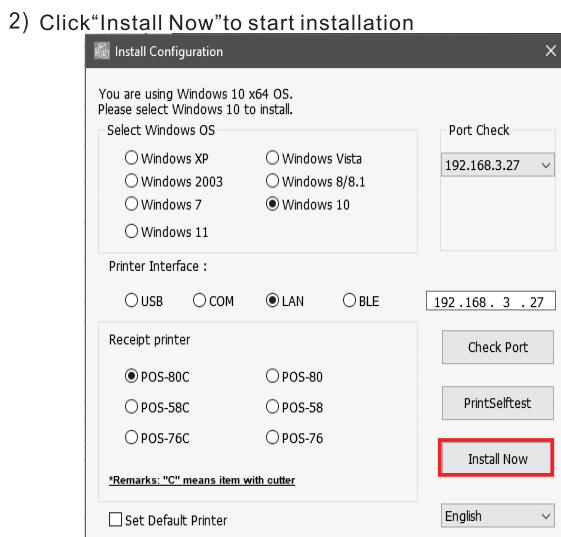
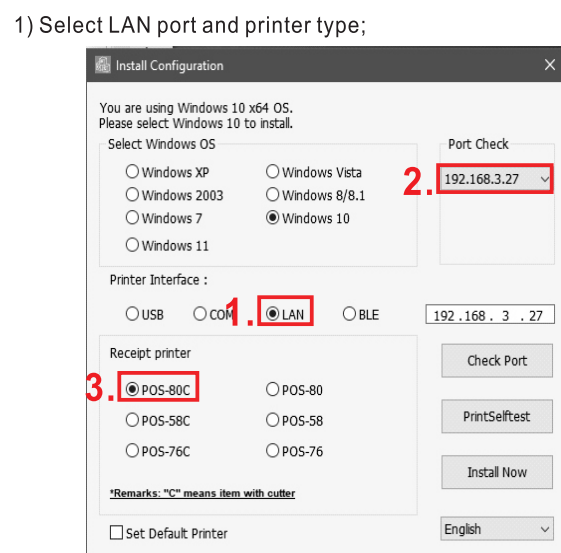


5) Installation is completed.

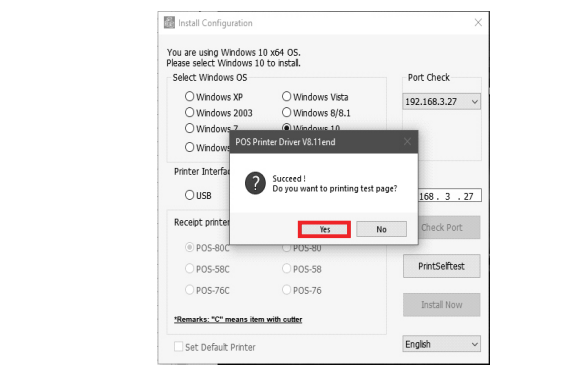
## INSTALL DRIVER

### LAN port driver installation

1. Double-click "POS Printer Driver V8.11"  
2. LAN driver installation



3) Select YES to print the test page and check the printer driver name;

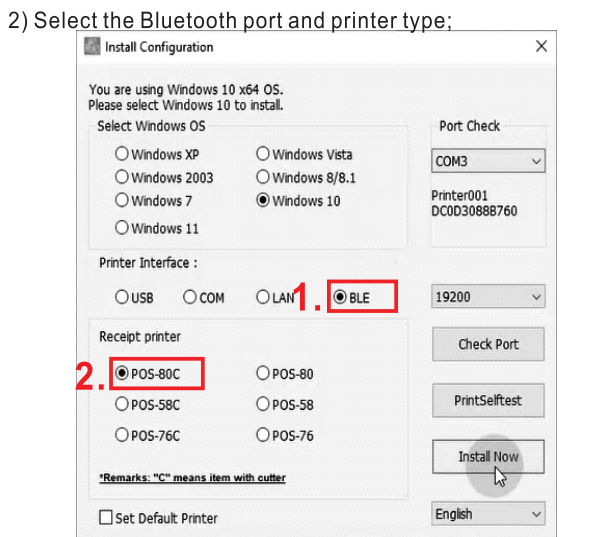
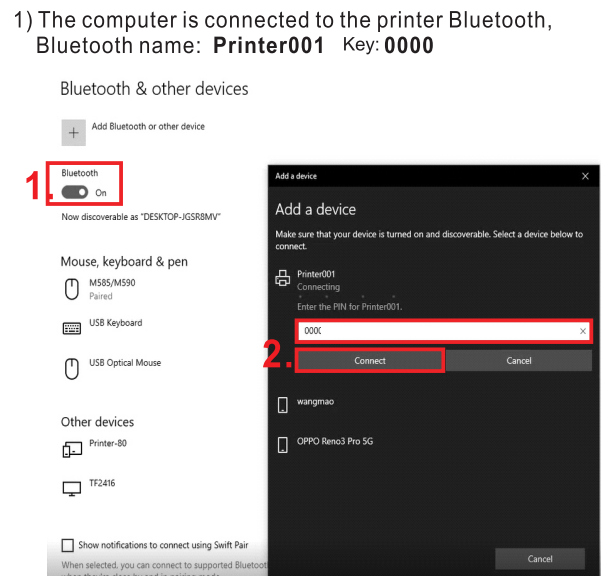


4) Installation is completed.

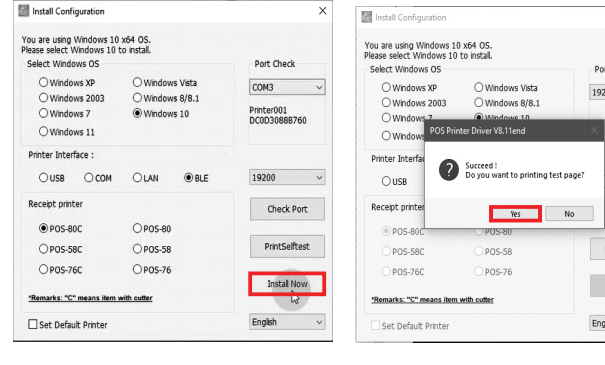
## INSTALL DRIVER

### Bluetooth driver installation

1. Double-click "POS Printer Driver V8.11"  
2. Bluetooth driver installation



3) Click "Install Now" to start installation

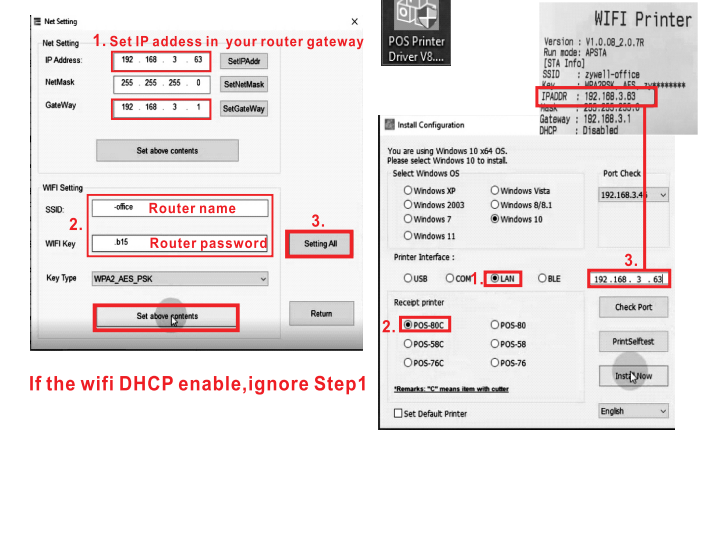
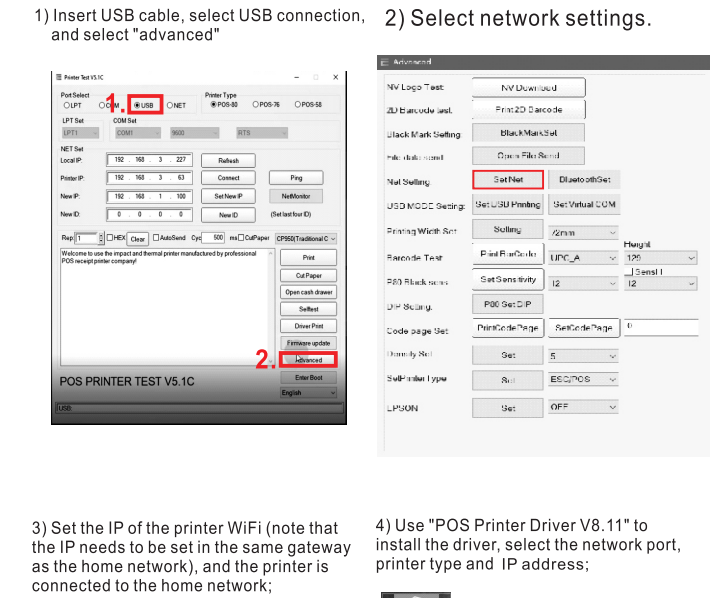


5) Installation is completed.

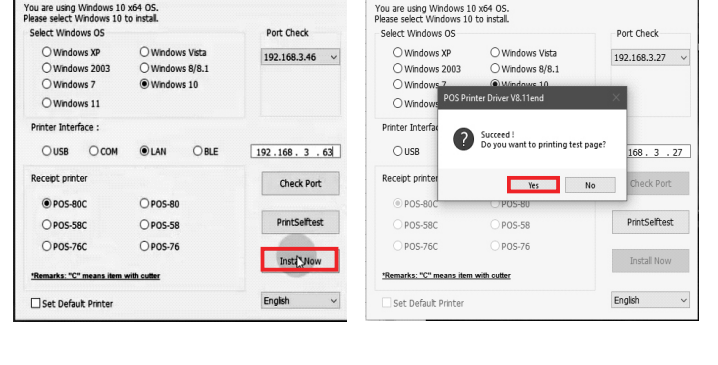
## INSTALL DRIVER

### WIFI driver installation

1. Double-click "Printer Test"  
2. WIFI driver installation



5) Click "Install Now" to start installation



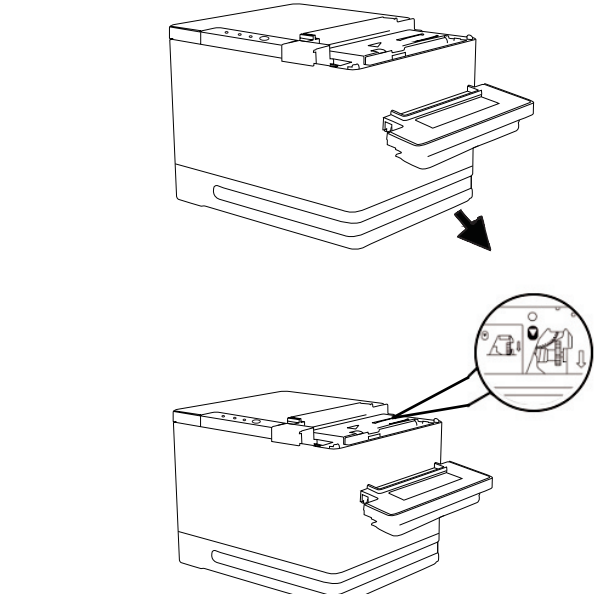
7) Installation is completed.

## TROUBLESHOOTING

Problems	Possible Reasons	Solution and Suggestion
Print random code	Character mismatch in font library, text printing garbled.	Non-Chinese printing: 1. Confirm whether the Chinese mode is turned on, if so, please use the tool to turn off the Chinese mode. Operating instructions: 1. Use "Printer Test" to set up and connect the printer. 2. Enter the advanced mode-IP 80 set DIP-Chinese mode-no-setting. Serial baud rate mismatch Keep the baud rate of the device consistent with that of the printer. 1. Print the self-check page to confirm the baud rate of the printer, please check "serial config". 2. Change the baud rate of computer serial port-control panel-reverse devices and printers-right click printers-properties-ports-configure ports-modify baud rate-apply OK.
Print font blur	1. Low printing density 2. Poor quality of paper roll 3. The life of the print head is near	1. Replace the paper roll 2. Modify the printing density: use "Printer Test" to set, connect the printer-advanced-Character set-enter the density value (the higher the value, the higher the density will be). 3. Replace the print head
The printer doesn't work properly.	Printer setup error	Restore factory settings: Instructions: Turn off the power of the printer press the "FEED" key for 5 seconds at the same time when the ERROR LED and the PAPER LED flash twice at the same time, release the "FEED" key, and the factory is successfully restored with a click.
The network connection cannot be printed.	IP address conflict	Modify the printer IP address: use "Printer Test" to set, connect the printer - NEW IP (Setup IP) set NEW IP.
ERROR LED and PAPER LED are always on, and buzzer sounds.	1. The upper cover of the printer is not covered properly; 2. Running out of printing paper;	1. Check whether the upper cover is covered properly. 2. Replace the printing paper.
Bluetooth can't print	Other Bluetooth devices occupy the serial number of printer Bluetooth.	Uninstalling bluetooth device
Incomplete printing	Paper setting is incorrect.	Check the paper setting size

## CUTTER STUCK MAINTENANCE

**Cutter stuck maintenance**  
**Method (1)**  
Turn off the power and then restart.  
**Method (2)**  
Turn the gear on printing head, cutter can be turned to its original position.



**Notice:** To avoid the damage of the printing head and automatic paper cutter, please do not open cutter and mechanism violently.

## CLEARANCE AND MAINTENANCE

**Clearance**  
One of the following occurred, please clean printing head.  
(1) Printing is not clear.  
(2) Any vertical is not clear.  
(3) Paper feed noisily.

**Printing head cleaning steps:**

Parts to be cleaned	Step	Recommend cleaning frequency
Print head	1. Turn off the printer. 2. Allow the print head to cool for at least one minute. 3. Use a cotton swab and 100% ethanol to clean the print head surface.	When change new paper
Rubber roller	1. Turn off the printer. 2. Rotate the platen roller and use a cotton swab to clean with 100% ethanol.	When change new paper
Paper tear bar	Use a cotton swab and 100% ethanol to clean.	When necessary.
Sensor	Use air brush or vacuum to clean dust of sensor.	Monthly.
Inner side of printer	Use air brush or vacuum to clean the dust.	When necessary.

**Warning**  
No part of this manual can be changed without agreement. The company reserves the right to modify the technical components, software and hardware. You may ask the distributors for more product information. No part of chapter in this manual can be copied or transmitted in any format without permission.